

KH-516 Series



CLASSIFICATION

KH-516-A 1 2-R (12)

① ② ③ ④ ⑤

| | |
|-----------------|--|
| ① SHAPE | A: SQUARE |
| | B: RECTANGLE |
| | C: ROUND |
| | D: EMERGENCY STOP |
| ② FUNCTION | 0: PILOT LAMP |
| | 1: ILLUMINATE PUSHBUTTON SWITCH (MOMENTARY) |
| | 2: ILLUMINATED PUSHBUTTON SWITCH(MAINTAINED) |
| | 3: PUSHBUTTON SWITCH (MOMENTARY) |
| ③ CONTACTS | 4: PUSHBUTTON SWITCH (MAINTAINED) |
| | 0: NO CONTACTS(PILOT LAMP) |
| | 1: 1C (1A1B) |
| | 2: 2C (2A2B) |
| ④ COLOR | R: RED |
| | G:GREEN |
| | Y: YELLOW |
| | O: ORANGE |
| | W: WHITE |
| | B: BLUE |
| ⑤ INPUT VOLTAGE | 6: 6V |
| | 12:12V |
| | 24: 24V |

PILOT LAMPS

KH-516-C00
KH-516L-C00



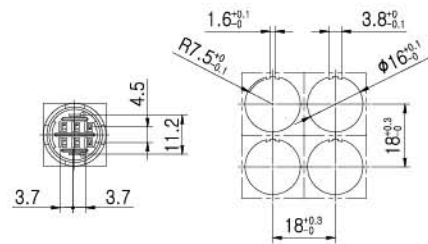
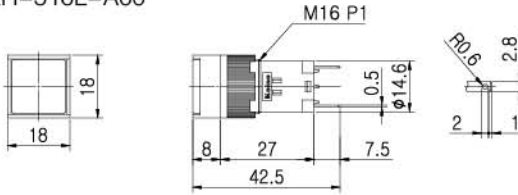
KH-516-A00
KH-516L-A00



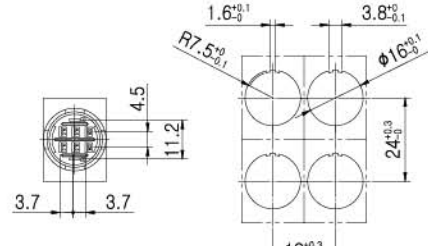
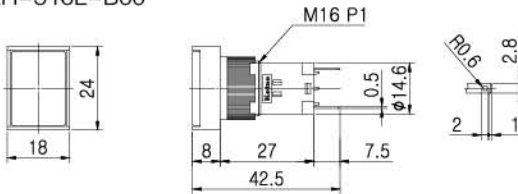
KH-516-B00
KH-516L-B00



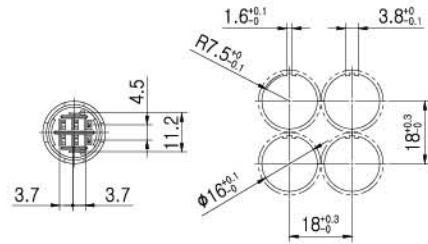
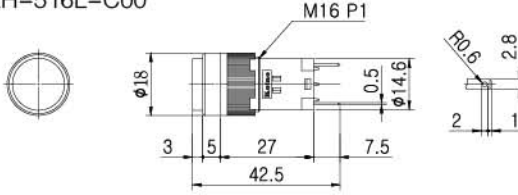
KH-516-A00
KH-516L-A00



KH-516-B00
KH-516L-B00



KH-516-C00
KH-516L-C00



CONTROL COMPONENTS

SQUARE LIGHT

TOWER LIGHT

MICRO SWITCH

FOOT SWITCH

LIMIT SWITCH

POWER SWITCH

HOIST SWITCH

CAM SWITCH

BUZZER

PHOTO SENSOR

PROXIMITY SENSOR

FLOATLESS LEVEL SWITCH

TIMER & COUNTER

RELAY

SOCKETS

TERMINAL BLOCK

CONTROL BOX

PID TEMP. CONTROLLER

ILLUMINATED PUSHBUTTON SWITCH(MOMENTARY)

KH-516-C11,12
KH-516L-C11,12



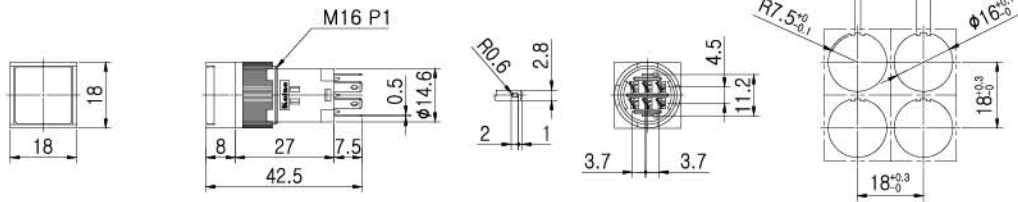
KH-516-A11,12
KH-516L-A11,12



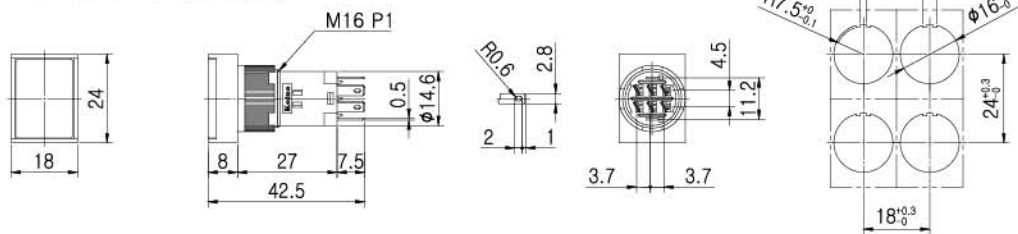
KH-516-B11,12
KH-516L-B11,12



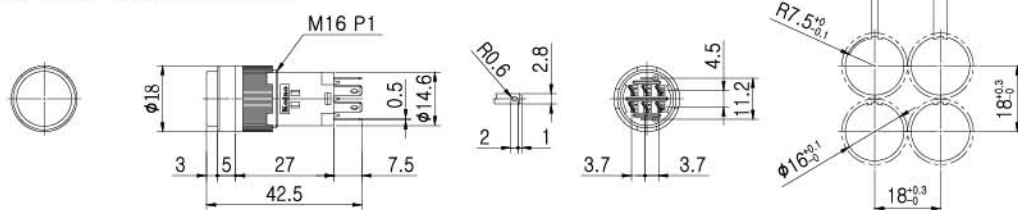
KH-516-A11(1c),A12(2c)
KH-516L-A11(1c),A12(2c)



KH-516-B11(1c),B12(2c)
KH-516L-B11(1c),B12(2c)



KH-516-C11(1c),C12(2c)
KH-516L-C11(1c),C12(2c)



ILLUMINATED PUSHBUTTON SWITCH(MAINTAINED)

KH-516-C21,22
KH-516L-C21,22



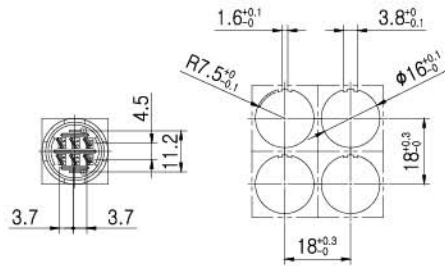
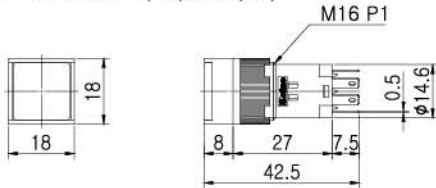
KH-516-A21,22
KH-516L-A21,22



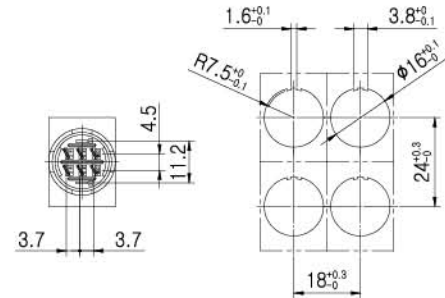
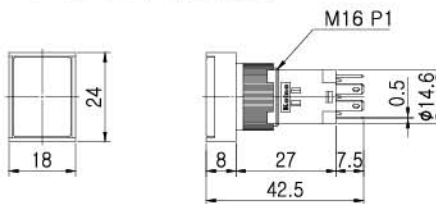
KH-516-B21,22
KH-516L-B21,22



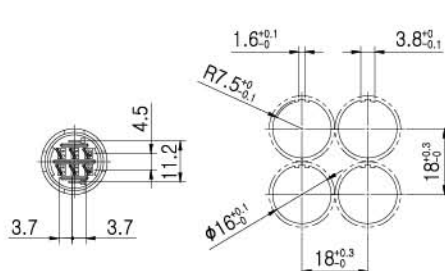
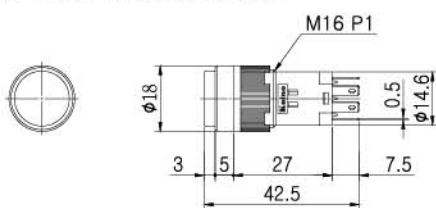
KH-516-A21(1c),A22(2c)
KH-516L-A21(1c),A22(2c)



KH-516-B21(1c),B22(2c)
KH-516L-B21(1c),B22(2c)



KH-516-C21(1c),C22(2c)
KH-516L-C21(1c),C22(2c)



CONTROL COMPONENTS

SQUARE LIGHT

TOWER LIGHT

MICRO SWITCH

FOOT SWITCH

LIMIT SWITCH

POWER SWITCH

HOIST SWITCH

CAM SWITCH

BUZZER

PHOTO SENSOR

PROXIMITY SENSOR

FLOATLESS LEVEL SWITCH

TIMER & COUNTER

RELAY

SOCKETS

TERMINAL BLOCK

CONTROL BOX

PID TEMP. CONTROLLER

PUSHBUTTON SWITCH(MOMENATRY)

KH-516-C31,32



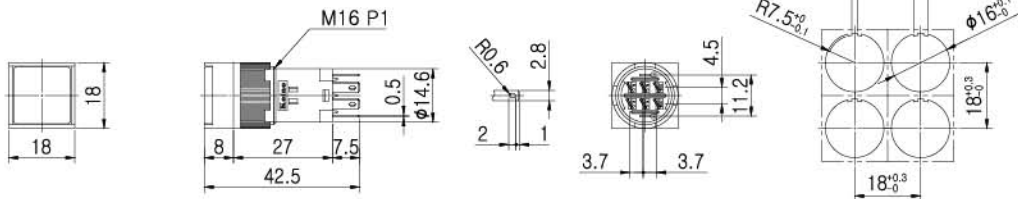
KH-516-A31,32



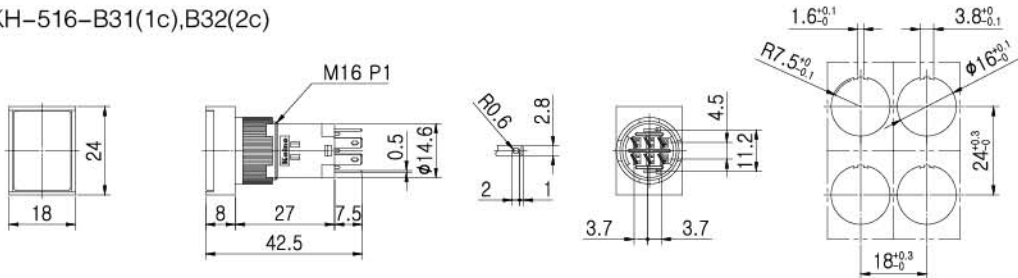
KH-516-B31,32



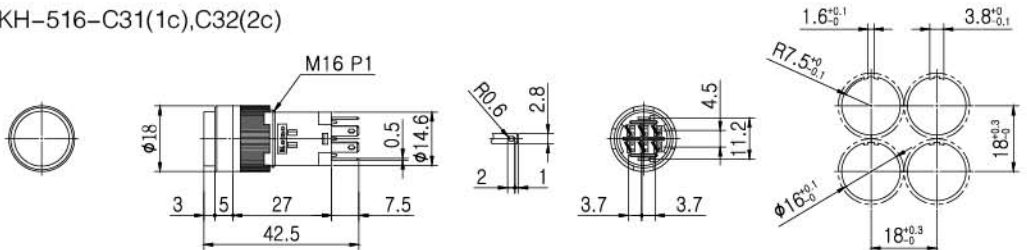
KH-516-A31(1c),A32(2c)



KH-516-B31(1c),B32(2c)



KH-516-C31(1c),C32(2c)



PUSHBUTTON SWITCH(MAINTAINED)

KH-516-C41,42



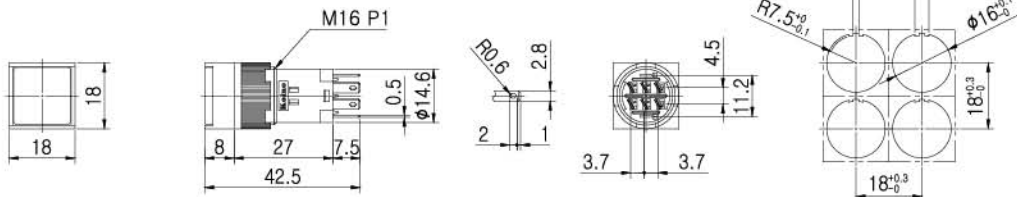
KH-516-A41,42



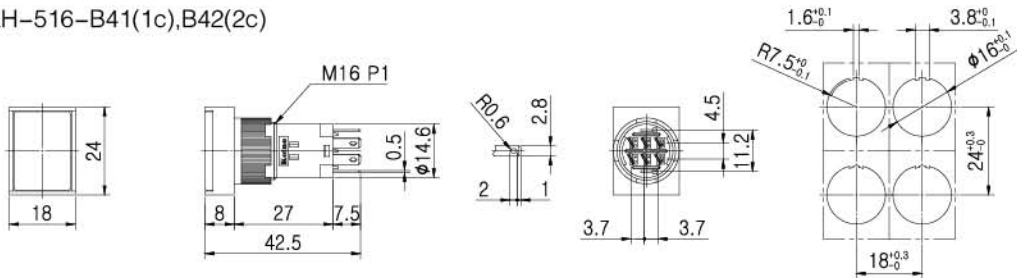
KH-516-B41,42



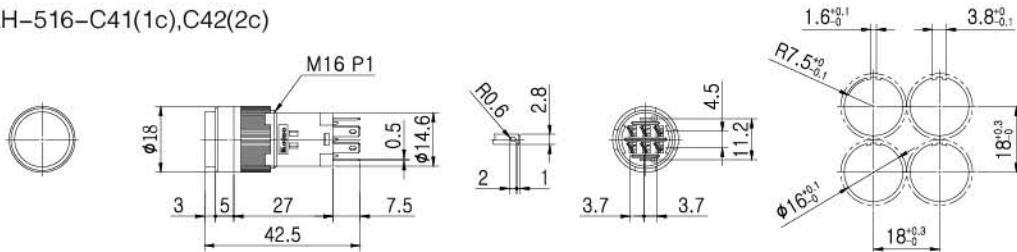
KH-516-A41(1c),A42(2c)



KH-516-B41(1c),B42(2c)



KH-516-C41(1c),C42(2c)



CONTROL COMPONENTS

SQUARE LIGHT

TOWER LIGHT

MICRO SWITCH

FOOT SWITCH

LIMIT SWITCH

POWER SWITCH

HOIST SWITCH

CAM SWITCH

BUZZER

PHOTO SENSOR

PROXIMITY SENSOR

FLOATLESS LEVEL SWITCH

TIMER & COUNTER

RELAY

SOCKETS

TERMINAL BLOCK

CONTROL BOX

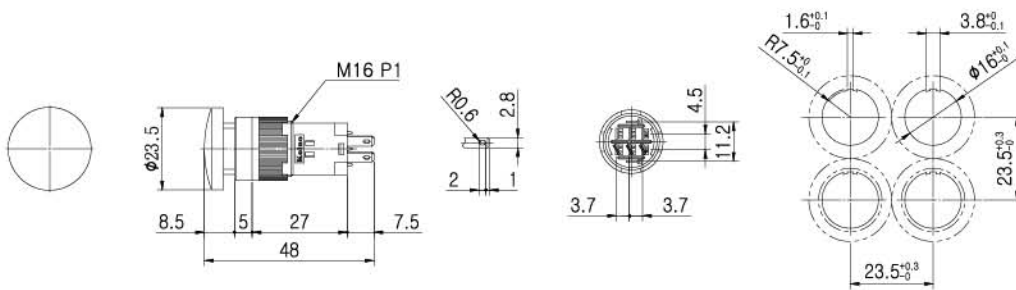
PID TEMP. CONTROLLER

PUSHBUTTON SWITCH(MUSHROOM HEAD TYPE)

**KH-516-D31,32
MOMENTARY**



**KH-516-D41,42
MAINTAINED**



ACCESSORIES

KA-16
SAFETY COVER FOR KH-516



LAMP REMOVAL TOOL
FOR KH-516



ANTI-ROTATION RING



CONTROL COMPONENTS

SQUARE LIGHT

TOWER LIGHT

MICRO SWITCH

FOOT SWITCH

LIMIT SWITCH

POWER SWITCH

HOIST SWITCH

CAM SWITCH

BUZZER

PHOTO SENSOR

PROXIMITY SENSOR

FLOATLESS LEVEL SWITCH

TIMER & COUNTER

RELAY

SOCKETS

TERMINAL BLOCK

CONTROL BOX

PID TEMP. CONTROLLER

Technical Information

Switching System

The switching element of KH-516 is equipped with normally open contact and normally closed contact.

1C and 2C contact available.

Material

Contact

Silver alloy + Copper

Housing

Nylon galss

Buttons

PC

Mechanical Characteristics

Mechanical Lifetime

Momentary type: 500,000 Cycles of operation

Maintained type: 200,000 Cycles of operation

Install

Tightening torque : Max. 6Kg/F.Cm

Electrical Characteristics

Standards

This product comply with “ Standards for low-voltage switching devices” EN IEC 60947-5-1

Contact Ratings

250VAC 1A (resistive load)

Insulation Resistance

Minimum 100M Ω (500VDC)

Contact Resistance

Maximum 30m Ω

Electrical Lifetime

70,000 cycles of operation

Electrical Characteristics—continues

Dielectric Strength

Between Live Parts: 1,000VAC(50/60Hz) for 1 minute

Between Live and Dead Parts: 1,000VAC(50/60Hz) for 1 minute

Lamp Ratings

FILAMENT LAMP: 6V(60mA), 12V(40mA), 24V(24mA)

LED LAMP: DC6V(40mA), DC12V(20mA), DC24V(20mA)

Environmental conditions

Operational Temperature

-15°C~+50°C

Operational Humidity

45~85%RH

Protection Degree

IP40

Shock Resistance

Approximately 100G(1,000m/s²)

Vibration Resistance

10~55Hz double amplitude 1.5mm (at X, Y and Z axis)

Approvals

Approbations

KC

Declaration of Conformity

None

CONTROL COMPONENTS

SQUARE LIGHT

TOWER LIGHT

MICRO SWITCH

FOOT SWITCH

LIMIT SWITCH

POWER SWITCH

HOIST SWITCH

CAM SWITCH

BUZZER

PHOTO SENSOR

PROXIMITY SENSOR

FLOATLESS LEVEL SWITCH

TIMER & COUNTER

RELAY

SOCKETS

TERMINAL BLOCK

CONTROL BOX

PID TEMP. CONTROLLER