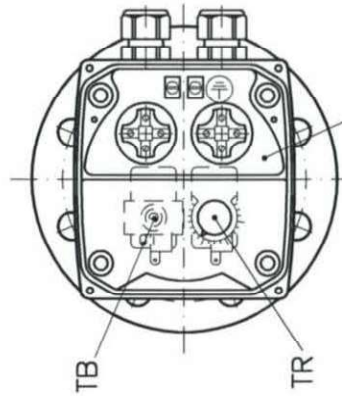


Flansch-Heizkörper
Flanged Heater
Explosionsschutz/Explosion proof

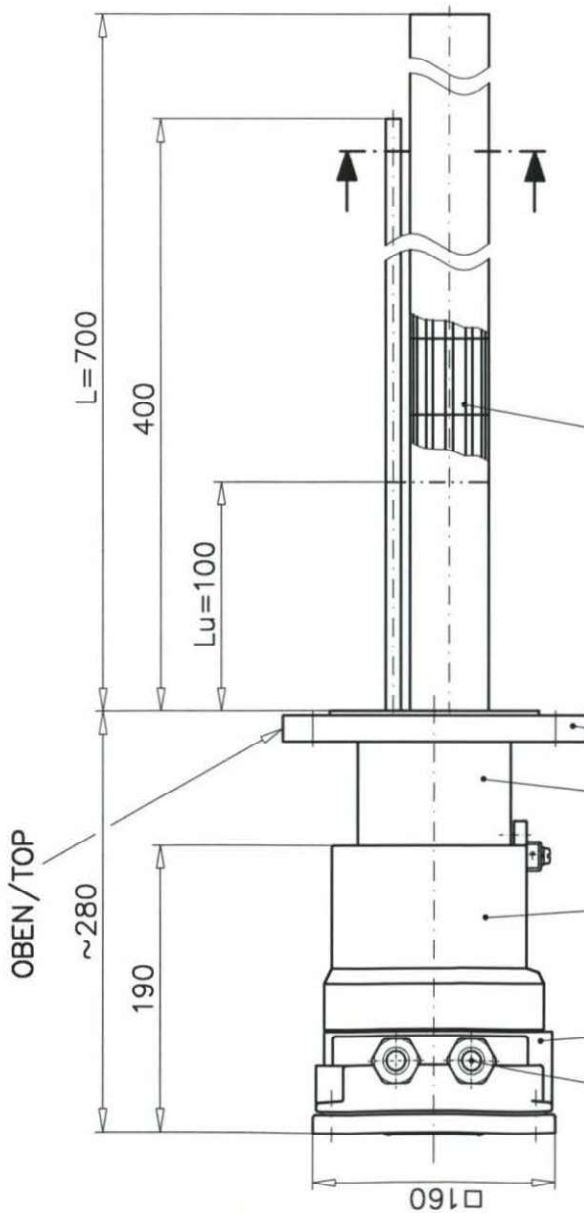
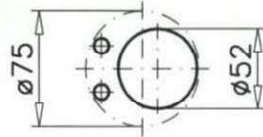
| | |
|------------------|----------------|
| Bauform/Size | B1 |
| Type | DHF22B1-1,5-T4 |
| Spannung/Voltage | 380V3~ |
| Maßblatt | HK2P |
| Dimension Sheet | |

| |
|-------------------|
| A- |
| K-820462_020 |
| Art.-Nr. 50030316 |
| 05.06.13 DR |

Ansicht ohne Anschlußkastendeckel
View without connection box cover



Elektrischer Anschlußraum
Electrical connection box



Heizeinsatz in Patronenform mit 1
auswechselbarem Keramik-Gliederheizkörper
Heating inset cartridge type with 1
exchangeable ceramic heating element

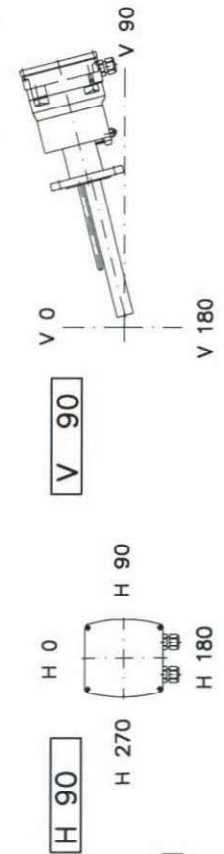
Flansch / Flange DN80 PN16 Typ 05 Form B1 EN 1092-1

Bundhülse / Flange bushing

Ex d IIC druckfest gekapseltes Gehäuse / Flameproof enclosure

Ex e Anschlußkasten / Connection box

Kabelverschraubungen / Cable glands 2x M25x1,5



Einbaulage waagrecht
"OBEN" markiert

Mounting position horizontal
"TOP" is marked