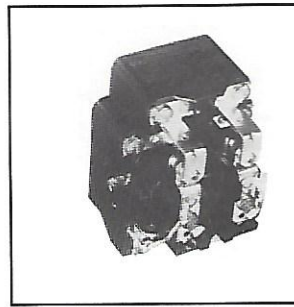




# SCREW TERMINAL, 30 AMP, 1-3 POLE

425 Series



The 425 Series is a high quality, low cost power relay capable of handling 30 Amps and 1 HP loads. The relay has sufficient spacing to allow 600VAC contact ratings, as well. This rugged design has an enclosed coil, screw terminals and SCO contacts as standard. 0.25 inch quick-connect terminals are optional as are tungsten contacts, permanent magnet blowout and a Form C auxiliary contact.

## DIMENSIONS Inches

for 1 and 2 Pole Units

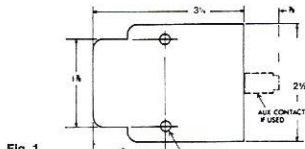


Fig. 1 Weight Approx. 11 oz.

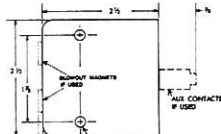


Fig. 2 Weight Approx. 9 1/2 oz.

NOTE: Depth all models 2 1/8".

for 3 Pole Units

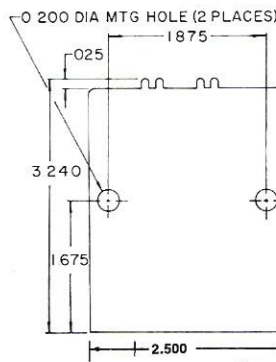
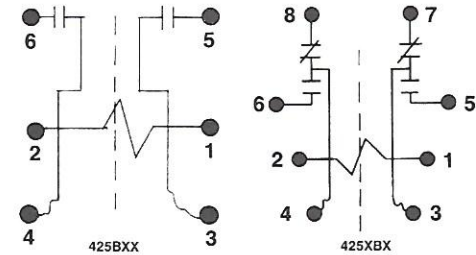


Fig. 3

## INTERNAL WIRING (Viewed from front of relay.)



For other wiring configurations, contact factory.

Mounting Note: Mount in vertical position with contacts up.

## CONTACT DATA

### 1 and 2 Pole Relays

Type	Load	30/DC	120-240/AC	125/DC	600/AC
"Hot Armature" (300V)	General Duty Motor (45% PF)	30A	30A 1 HP	*	—
Insulated Armature (600V)	General Duty Motor (45% PF)	30A	30A 1 HP	*	10A
*Contact rating for models with pm blowouts (69)				125/DC	
Contacts				NO	20A
				NC	20A

### 3 Pole Relay

Load	30/DC	120-240/AC	208-240/AC	277/AC	600/AC
General Duty	30A	25A	25A	17A	10A
Motor (45% PF)	1 1/2, 1 HP Per Pole	1 1/2, 1 HP Per Pole	3 1/2, 3 HP		

## COIL DATA

### 1 and 2 Pole Relays

Voltage	AC, 50/60Hz (9.8VA)		DC, (2.0W)	
	mA	Ω	mA	Ω
6	1600	0.86	333	18
12	820	3.2	169	71
24	410	12	84	288
120*	85	290	18-21	6050
240†	43	1200	—	—
480**	22	4500	—	—

\*AC Coil is 120V, 50/60Hz, DC Coil is 110-125VDC

\*\*U.L. and C.S.A. Listing only for insulated armature.

†For 220VDC use 6000 Ω, 5W resistor in series with 110VDC relay.

### 3 Pole Relay

Voltage	AC, 50/60Hz (11VA)		DC, (4W)	
	Resistance, Ω		Resistance, Ω	
12	1.8		35.5	
24	6.7		142	
48	27		568	
120*	170		2980	
240**	680		—	
480	2720		—	

\*AC Coil is 120V 50/60Hz, DC Coil is 110-125VDC.

\*\*NOTE: For 220VDC, use 3600 ohm 10-watt resistor in series with coil of 110VDC relay.

### 1, 2 and 3 Pole Relays

Min. Operate:	AC: 85% of nominal voltage or less @ 25°C
	DC: 75% of nominal voltage or less @ 25°C
Max. Overvoltage:	110% of nominal

## APPROVALS

- UL Recognized Listing: File #E13224. Features 18 and/or 90—Yellow Card, UL Listed Component.
- CSA Listing: File #40787

## GENERAL DATA

Contact Material:	Silver Cadmium Oxide
Ambient Temperature:	AC: -55°C to +45°C DC: -55°C to +80°C
Dielectric Strength:	2500VAC, between All Mutually Insulated Current Carry Parts and Those Parts to Ground
Insulation Resistance:	1,000 Megohms min. at 500VDC
Operate Time:	30 Milliseconds
Release Time:	15 Milliseconds
Life:	100,000 Operations at Rated Load 500,000 Operations at 1/2 Load 10 Million Operations at No Load

## ORDERING CODE

Typical Type No. **425 XBX 6990 -120A**

Series \_\_\_\_\_  
425 Screw Term., 30 Amp, 1-3 Pole

Contact Arrangements \_\_\_\_\_

"Hot" Armature Types (300V)  
Dim. Fig.

AXX	SPST-NO	2
XXA	SPST-NC	2
XAX	SPDT	2
HXX	SPST-NO-DM	2
XXH	SPST-NC-DB	1
XHX	SPDT-DB	1

Insulated Armature Types (600V)

XXH2	SPST-NC-DB	1
XHX2	SPDT-DB	1
HXX2	SPST-NO-DM	2
BXX	DPST-NO	2
XXB	DPST-NC	1
XBX	DPDT	1
CXX	TPST-NO	3
XCX	TPDT	3

Options

Tungsten Contacts (High Inrush)—Code W  
0.25 Inch Quick-Connect Terms.—Code 18  
Perm. Magnet Blowout (1 & 2 Pole Relays Only)—Code 69  
1 Aux. Contact (SPDT Snap Switch, 10A)—Code 90  
2 Aux. Contacts (Each SPDT Snap Switch, 10A)—Code 91

Coil Voltage \_\_\_\_\_  
AC: 6, 12, 24, 48, 120, 240 480 (Add "A")  
DC: 6, 12, 24, 48, 110-125 (Add "D")