

Cam switches

 Characteristics (p. 203)

► MAIN SWITCH (CONTINUED)

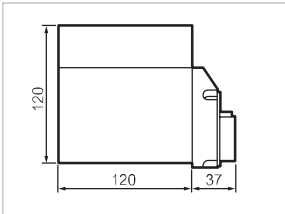
PR 160 -200 A (AC21)

2-screw panel mount - interval: 50 mm

Cat. No.

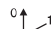


MS3EV733



Red padlockable handle
for up to 4 padlocks
□ 72 yellow frame

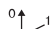
**With engraving
MAIN SWITCH**

3P+ ± - 3 contacts 
3P+N - 4 contacts

Designation

PR160 1103GN E J723MND61	MS3EV733
PR160 1104GN E J723MND61	MS4EV733

Without engraving

3P+ ± - 3 contacts 
3P+N - 4 contacts

PR160 1103GN E J72MND61	MS3EV72
PR160 1104GN E J72MND61	MS4EV72

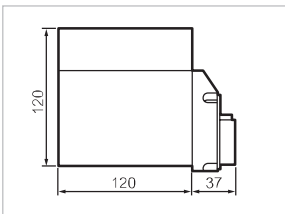
PR 160 -200 A (AC21)

2-screw panel mount - interval: 50 mm

Cat. No.

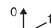


MG3EV733



Grey padlockable handle
for up to 4 padlocks
□ 72 grey frame

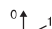
**With engraving
MAIN SWITCH**

3P+ ±- 3 contacts 
3P+N - 4 contacts

Designation

PR160 1103GN E V723MND61	MG3EV733
PR160 1104GN E V723MND61	MG4EV733

Without engraving

3P+ ± - 3 contacts 
3P+N - 4 contacts

PR160 1103GN E V72MND61	MG3EV72
PR160 1104GN E V72MND61	MG4EV72

Cam switches

 Characteristics (p. 203)

► MAIN SWITCH (CONTINUED)


PR 160 -200 A (AC21) **2-screw panel mount - interval: 50 mm** **Cat. No.**



MS4EV973

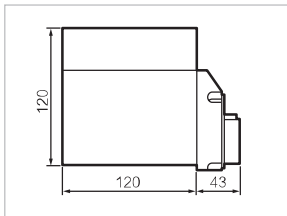
Red padlockable handle
for up to 4 padlocks
□ 96 yellow frame

**With engraving
MAIN SWITCH**

3P+ ± - 3 contacts 
3P+N - 4 contacts

Designation

PR160 1103GN E J963GND61	MS3EV973
PR160 1104GN E J963GND61	MS4EV973



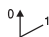
PR 160 -200 A (AC21) **Rear mounting with clutch drive and door interlock** **Cat. No.**



MS3RV733

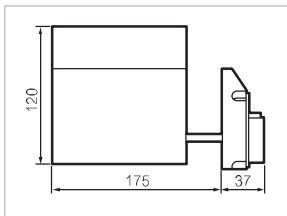
Red padlockable handle
for up to 4 padlocks
□ 72 yellow frame
Clutch drive and
door interlock

**With engraving
MAIN SWITCH**


3P+ ± - 3 contacts 
3P+N - 4 contacts

Designation

PR160 1103GN SV6 J723MND61	MS3RV733
PR160 1104GN SV6 J723MND61	MS4RV733



Without engraving

3P+ ± - 3 contacts 
3P+N - 4 contacts

PR160 1103GN SV6 J72MND61	MS3RV72
PR160 1104GN SV6 J72MND61	MS4RV72

Cam switches

 Characteristics (p. 203)

► MAIN SWITCH (CONTINUED)

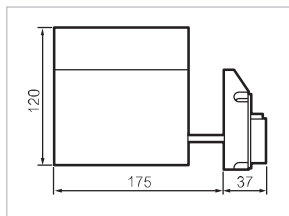
PR 160 -200 A (AC21)

Rear mounting with clutch drive and door interlock

Cat. No.



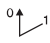
MG4RV733



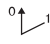
Grey padlockable handle
for up to 4 padlocks

□ 72 grey frame

With engraving
MAIN SWITCH

3P+ ± - 3 contacts 
3P+N - 4 contacts

Without engraving

3P+ ± - 3 contacts 
3P+N - 4 contacts

Designation

PR160 1103GN SV6 V723MND61	MG3RV733
PR160 1104GN SV6 V723MND61	MG4RV733

PR160 1103GN SV6 V72MND61	MG3RV72
PR160 1104GN SV6 V72MND61	MG4RV72

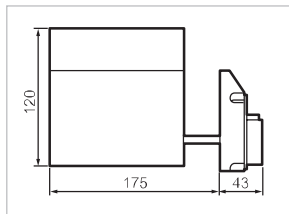
PR 160 -200 A (AC21)

Rear mounting with clutch drive and door interlock

Cat. No.



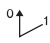
MS4RV973



Red padlockable handle
for up to 4 padlocks

□ 96 yellow frame

With engraving
MAIN SWITCH

3P+ ± - 3 contacts 
3P+N - 4 contacts

Designation

PR160 1103GN SV6 V963GND61	MS3RV973
PR160 1104GN SV6 V963GND61	MS4RV973